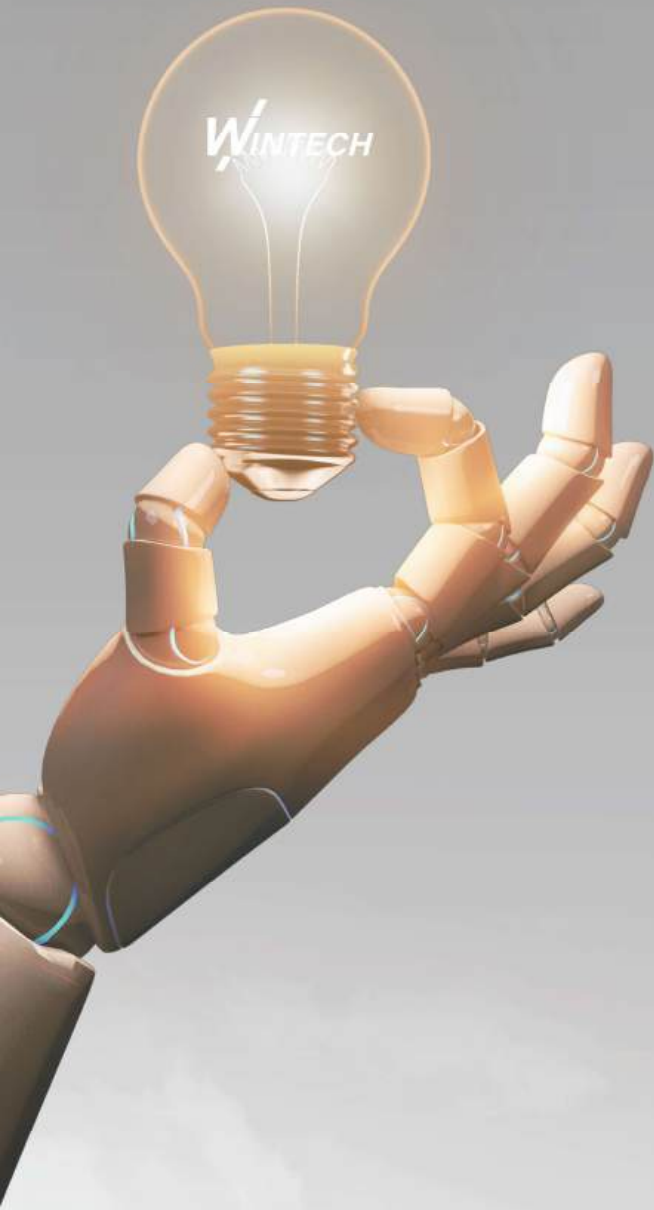




WINTECHKOREA
INSIDE YOUR LIFE



GREETING

Thank you for visiting Wintech Korea.

Established in 2001, Wintech Korea Co., Ltd. **has provided various types of film for printing, packaging, lighting and other customer needs**, and has taken the lead in various industrial developments.

In January 2018 Wintech Korea introduced A PET extrusion line from the German firm BREYER and a PMMA sheet extrusion line in 2020, transforming into a specialized plastic manufacturer instead of a simple distributor. Since then we've utilized our specialized personnel and excellent facilities to create high-quality PET and PMMA products and have given customers great satisfaction.

The executives and employees at Wintech Korea do not settle for the present. To ensure competitiveness, it has been ceaselessly developing new products and innovation using a technology development institute. Wintech Korea will be here as your stepping stone to your success. We will continue our efforts to think from the customers' point of view, seek mutual growth, and care for the environment and the future.

Thank you.

Hee-jo Park, CEO of Wintech Korea

COMPANT PROFILE

Company name	Wintech Korea
President	Heejo Park
Main Business	Manufacture of plastic PET, PMMA, PP and PS sheet and roll
Establishment	2001.03
Web page	www.wintechkorea.com
Address	1st Factory Paju-si, South Korea 2nd Factory Yangju-si, South Korea
Certification	ISO 9001 / ISO 14001

"World's Best Plastic Lens Design and Manufacturing Technology"

* LPI : Lenses Per Inch

Excel-Lenti 100, 90, 75, 40 LPI

- Material : PET
- Applications : Business cards, POP, book covers, character cards, etc.
- Recommended printing method : UV offset printer, digital inkjet printer

| Lenticular Sheet Features

Product	Usage	Lens Thickness	Sheet Size(mm)	Viewing Angle
magic-lens 100	Filp&Motion	0.413mm	710*510// or 510*710//	53°
	3D	0.600mm	710*510// or 510*710//	31°
magic-lens 90	3D	0.636mm	710*510//	31°
magic-lens 75	3D+Filp&Motion	0.455mm	710*510//	49°
		0.470mm	710*510// or 510*710//	
magic-lens 40	3D+Filp&Motion	0.835mm	600*600//	49°
		0.826mm	1280*1830//	

Excel-Lenti 40, 20 LPI

- Material : PS
- Applications : Framed gallery, large Interior, billboards, panel, etc.
- Recommended printing method : digital inkjet printer by lamination



"For a Brighter World"

PMMA LGP(Light Guide Plate)

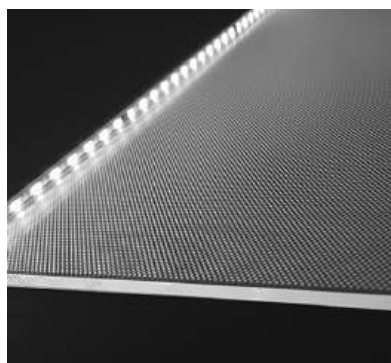
- Applications : LCD TV, EDGE LIGHTING PANELS
- Features
 - New lenticular pattern : Pitch(70 μ m) / Height(8 μ m ↑)
 - To preventive moire phenomen at UHD LCD panel
 - Brightness up 5→8%



Diffuser Sheet for Light Usage

- Applications : Household/Office LED lightings, LED streetlamps, Lightings for display and architecture, etc.
- Features
 - The light from LED lamp is diffused by diffuser beads inside of diffuser plate. It diffuses LED light more.
 - Diffused light offers excellent diffuse transmittance, refraction transmittance, and superior illumination.

Material	thickness	Transmittance
PMMA	2~3mm	60~80%
PS	1.2~1.5mm	60%
PET	0.2~0.5mm	60%



PET Reflecting Film

- **Features** : excellent reflectivity.
- **Thickness** (bead type : 0.225mm, non bead type 0.188mm)

AL Heat Sink Plate

- **Features** : It is slightly alkali washed and has excellent dimensional stability.
- **Thickness** 0.3mm

PMMA Normal Sheet for Industrial and Signage Usage

- **Applications** : signage, industrial board, Interior materials, sound-proof wall etc.
- **Features**
 - Excellent transparency and weather resistance
 - Features excellent clarity and various color
 - Excellent processibility and No toxic materials



"Increase the Perfection of the Product"

A-PET for Graphic and Package

- **Applications** : transparent cases, posters, promotional material, publications, business cards, face shields, price charts, etc
- **Features**
 - Guaranteed excellence of printing quality (Dyne 40~50 adjustable)
 - Many printing methods can be applied(UV-Offset, Silk Screen, Digital Printing)
- **Thickness** 0.15~1.0mm / Max. 1,350 mm (53")



A-PET for Electronic Package

- **Applications** : Tape carrier package, electronic components tray
- **Features**
 - Stable surface resistance
 - Appropriate product response for each application model
- **Thickness** 0.15~1.5mm / Width: Max. 1,350 mm (53")



PETG for Medical

- **Applications** : Medical device packaging, use of orthodontic
- **Features**
 - 100% medical PETG (FDA-approved) and Harmless to the human body
 - Can be gamma-ray sterilized
 - Complex molding possible without bloom
- **Thickness** 0.25~2.0mm / Width: Max. 1,350 mm (53")



"Materials Close to Nature"

* PLA : Poly Lactic Acid

Eco-Forest PLA Sheet

- Dictionary definition of PLA : The Plastic made from starch that can be rotting in its natural state
- Features : Thickness uniformity, printable, advanced Shock-resistant against existing PLA
- Applications : Clear folding box, clear file holder, hang tag clothing, point of purchase

Biodegradable

- Soil (Ambient)
- Home Compost
- Industrial Compost
- Fresh Water
- Marine Water
- Anaerobic

Biobased

Sugar used as feedstock
Other sources demonstrated

Fermentation

Microbial engineering enables high polymer (PHA) accumulation in microbes.



Products and Applications

PHAs can be compounded and processed using conventional plastics processing equipment.

Recovery

High Purity polymer is recovered and converted into usable form for downstream processing

PCR and Bio-Mass sheet

- Dictionary definition of PCR : Post Consumer Recycled material
- Dictionary definition of Bio-Mass : Bio-PET resins are manufactured using 30% of bio-based raw materials of monoethylene glycol refined from molasses, a byproduct of sugar cane processing
- Features : Same quality as traditional plastic products, Repeated use of the product , Reducing CO2 emissions by 28%
- Applications : Normal PET and PMMA Products





WINTECHKOREA

www.wintechkorea.com



EU Representative & Distribution

Am Kronberger Hang 2, D-65824 Schwalbach am Taunus, Germany
TEL. +49 (0) 6196 95342 00 | Email. info@ptn-global.com